

1952–1990

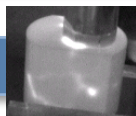
1990

2000

2010

2017

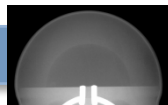
Weapons



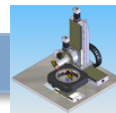
Ceramic



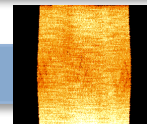
Pit scanner



Detonators



Hemi density



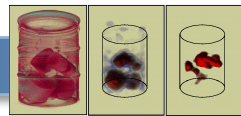
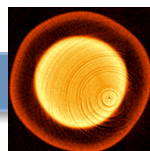
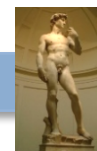
High explosives



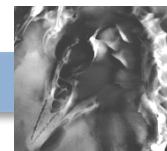
COLLOSIS

50%

Work for Others WFO

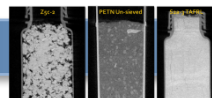
FHWA
Bridge columnDOE EM
Barrel assayKnolls APL
Fuel pelletsBART
railsNASA
Space Shuttle

David

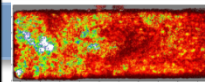
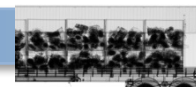
Yale
Archaeopteryx

5%

Global Security

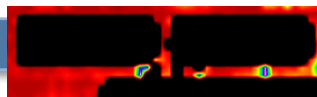


EXD explosives

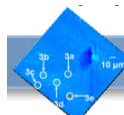
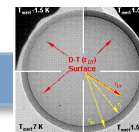
DHS – NDC of
InfrastructureDNDO
SNM in CargoDOE CMI
Rare Earths

40%

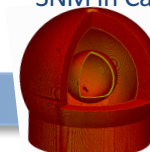
Lasers



Amplifier plates

Laser
glass

DT ice layer

Double shell
targets

Hohlraum

5%

Current NDC Capability at LLNL

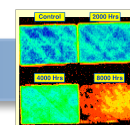
- ~20 – 25 FTEs, ~\$17M/year
- \$18M in equipment
- Employs X-ray, acoustic, thermal, particles, surface NDC

Cooperative R&D agreements

CRADA



General Motors



Boeing